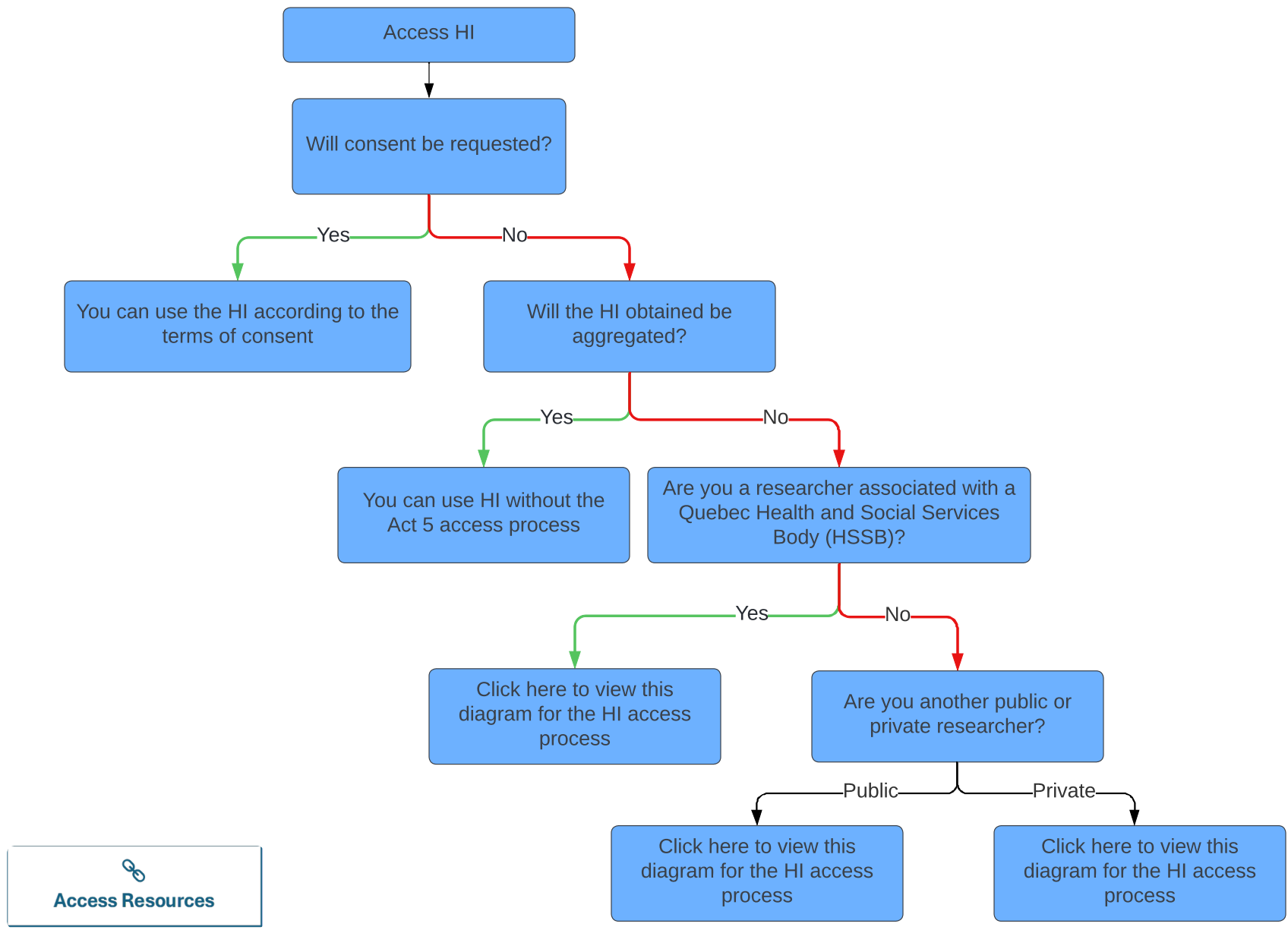
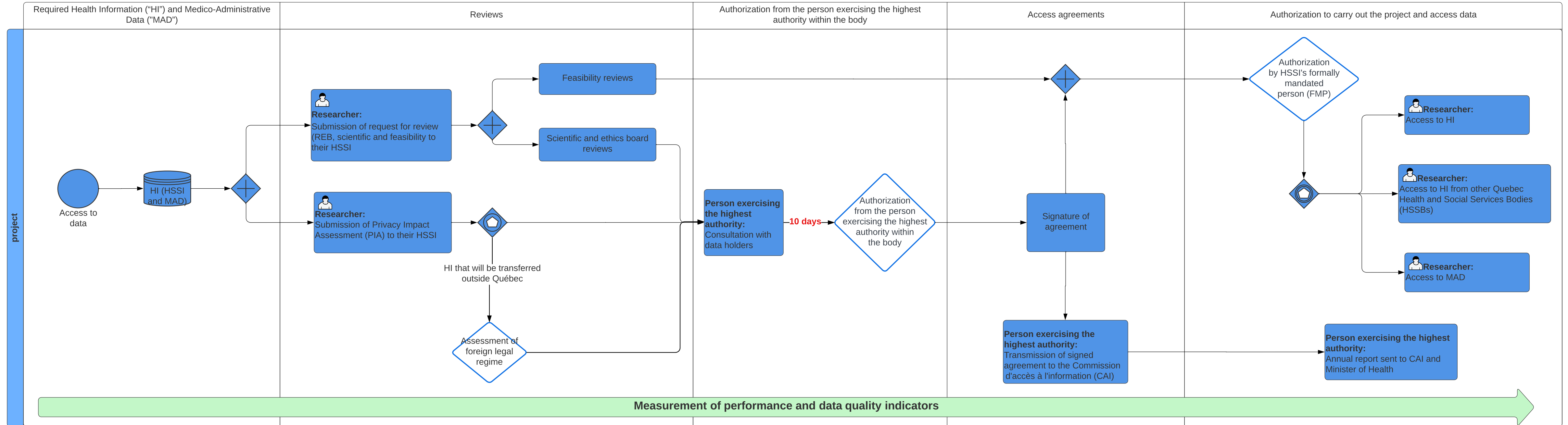


# What health information (HI) access process applies to my case?

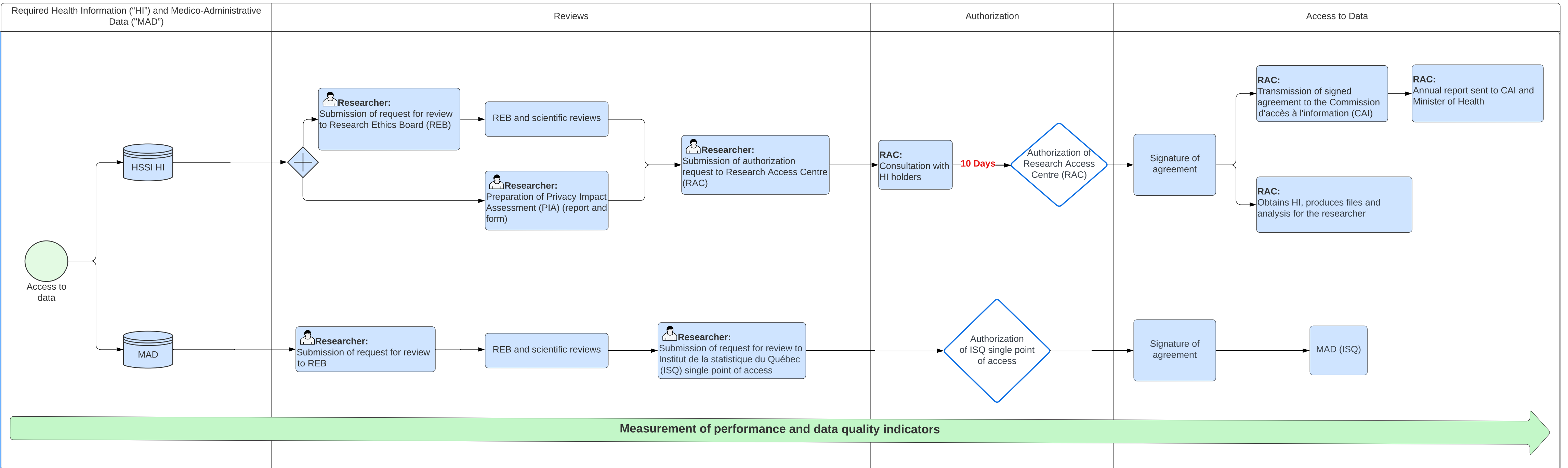


 **Access Resources**

# Access to Health Information (HI) for RESEARCHERS ATTACHED TO a Health and Social Services Body (HSSB)



## Access to Health Information (HI) for OTHER RESEARCHERS (PUBLIC SECTOR)



## Access to Health Information (HI) for OTHER RESEARCHERS (PRIVATE SECTOR)

