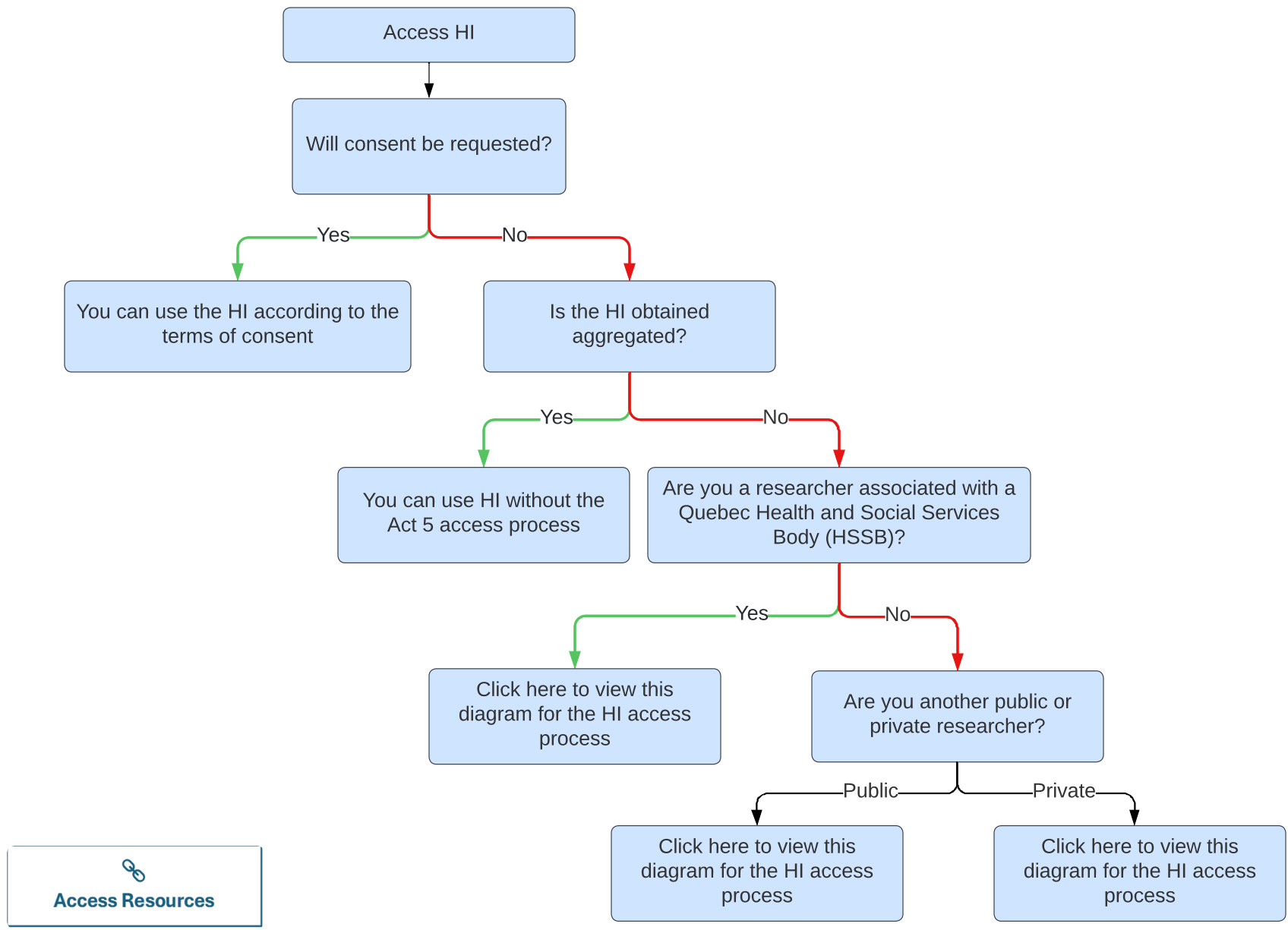
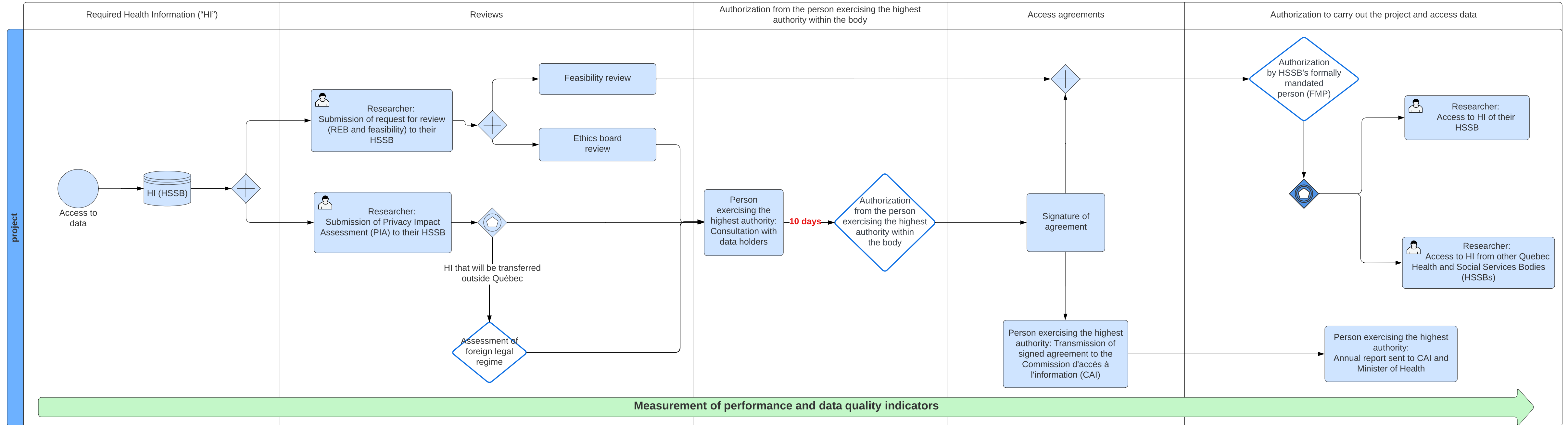


What health information (HI) access process applies to my case?

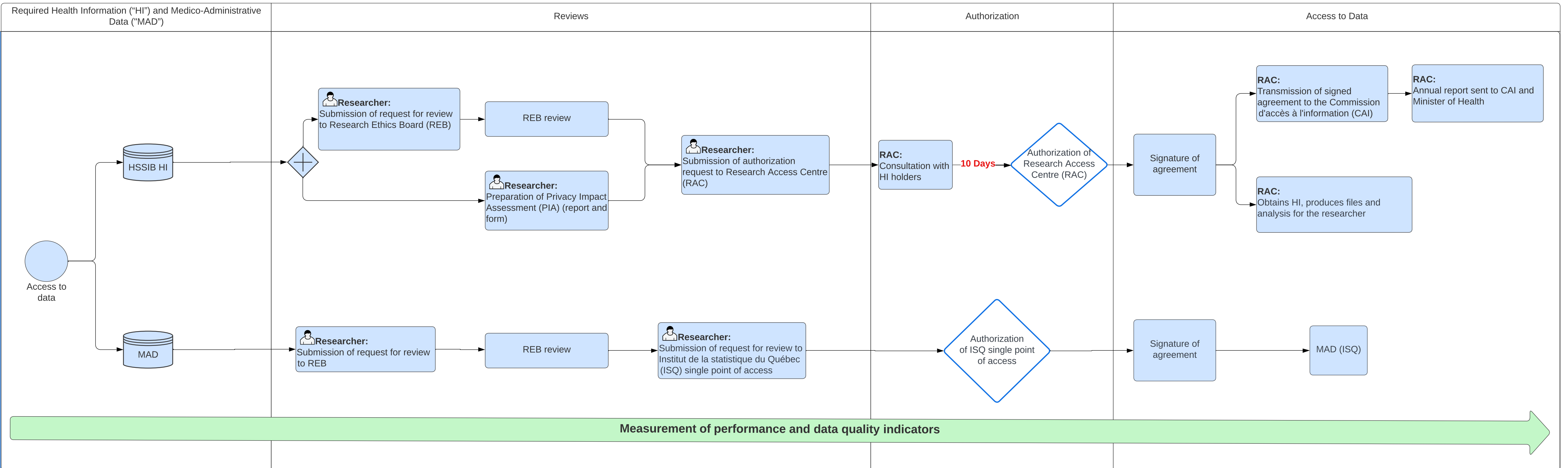


 **Access Resources**

Access to Health Information (HI) for RESEARCHERS ATTACHED TO a Health and Social Services Body (HSSB)



Access to Health Information (HI) for OTHER RESEARCHERS (PUBLIC SECTOR)



Access to Health Information (HI) for OTHER RESEARCHERS (PRIVATE SECTOR)

